

## seepex pumps prove their power.

UPM is a traditional Finnish company which came into being in autumn 1995 through the merger of Kymmene Corporation, Repola Ltd. and their subsidiary United Paper Mills Ltd. The company has approximately 24,000 employees and runs production sites in 14 different countries.

At UPM Augsburg, up to 530,000 tonnes of calendered, web-printed paper, both coated and uncoated, are produced every year for magazines, newspaper supplements, promotional leaflets and mail order catalogues using two paper machines.

### **The starting situation**

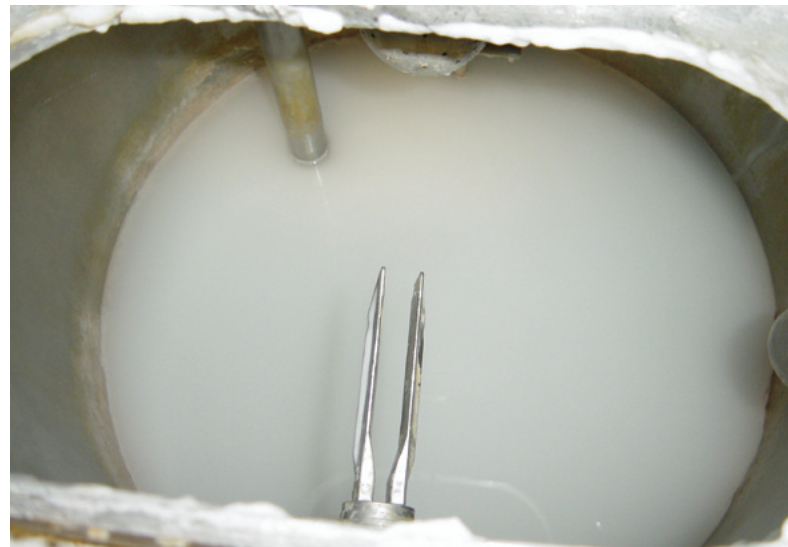
Starch products are of great significance in paper manufacture and are deployed in different phases of the paper production process. Starch is added to the fibre material to improve the paper's durability when processing wet end starch. Surface and coating colour starches improve the printability and writing properties of the paper surfaces or serve as binding agent in paper coatings.

### **The solution**

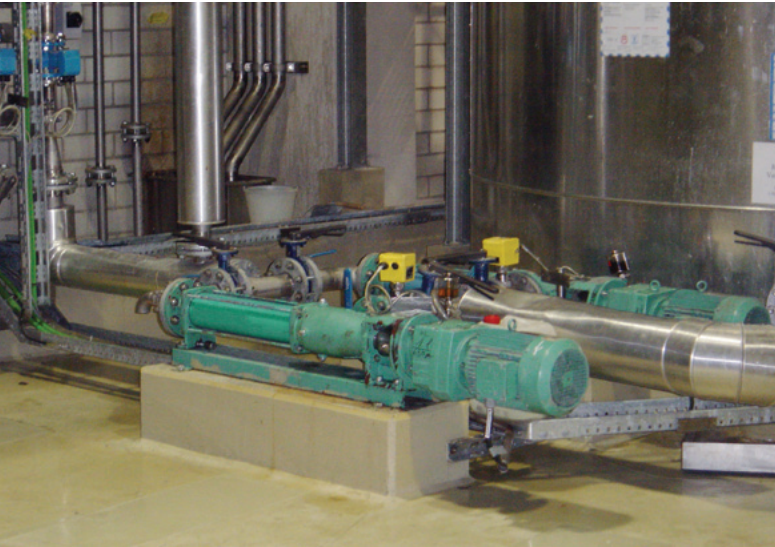
seepex pumps are used at the Augsburg factory of UPM-Kymmene Papier GmbH & Co. KG to convey wet end starch among other things. The wet starch processing is principally divided into the following steps:

- unloading
- slurry
- starch cooker
- storage tanks
- dosing

The starch is supplied by a tank vehicle in powder form. With the help of an unloading compressor the starch is pneumatically discharged into a storage silo. Under this is a slurry station, in which a starch pulp made of starch powder and water is generated. Using two seepex pumps from the BN range, this starch pulp is conveyed to steam-heated starch cookers, in which it is first boiled and then dissolved without residue.



**Mixture of starch powder and water in the agitator**



**seepex Pump of Range BN  
between storage tank and  
paper machine**

The starch is then thinned out, put into intermediate storage in an insulated storage tank as starch paste and an agitator used to ensure the maintenance of even consistency. Two seepex BN dosing pumps convey this starch paste across a filter in the paper mixture to the paper machine.

**The benefit**

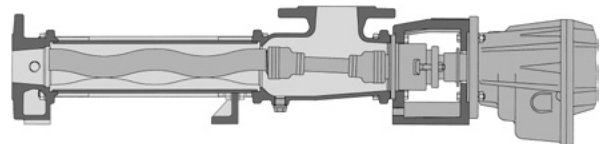
The seepex pumps run for 24 hours per day without notable problems to the full satisfaction of the operator. The service life of the stators is approx. 3-4 years.

**Key Facts**

- Continuous operation 24 h/day
- Problem-free conveying of high viscosities

**Significant Cost Savings**

- Cost-effective due to high service life



**Installed Pump Type**

- Range BN

And what can we get flowing for you? Your nearest contact:

Or visit [www.seepex.com](http://www.seepex.com)